



Know Before You Go

As we set sail again, discover what you can expect—and be sure to check back as information is frequently updated.

Last Updated on **March 11, 2022**

Welcome to an Unforgettable Vacation at Sea

We are pleased to share our plans for a phased relaunch of Disney Cruise Line.

Currently, Disney Cruise Line continues to require all vaccine-eligible Guests (based on US eligibility requirements) to be fully vaccinated against COVID-19, as defined by the US Centers for Disease Control and Prevention (CDC), at the time of sailing. This is a requirement for all Guests (US and international) ages 5 and older.

Guests who are not vaccine-eligible because of age must provide proof of a negative COVID-19 test result (paid for by the Guest) taken between 3 days and 24 hours before their sail date. Guests ages 4 and under must complete the testing requirements. The test should be a NAAT test, rapid PCR test or lab-based PCR test. **Rapid antigen tests are not accepted.**

While our cruise experience may have changed a bit, we've come up with new and exciting offerings to create magical memories together—tailored to our times and presented with all the care you've come to expect from Disney Cruise Line. From original live shows inside the lavish Walt Disney Theatre to innovative new ways to see and interact with Disney Characters throughout the ship, storytelling springs to life on a Disney cruise.

As we set sail again, the health and safety of our Guests, Cast Members and Crew Members is a top priority. Our focus remains on operating our ships in a responsible way that continues to create magic for all on board. We are resuming sailing in a gradual, phased approach that emphasizes multiple layers of health and safety measures, considering guidance from the [US Centers for Disease Control and Prevention](#) and other medical experts. Under this guidance, we've reimaged your cruise experience so we all can enjoy the magic responsibly.

Additionally, enjoy peace of mind when booking your cruise, knowing there are options available that allow you to change or cancel your booking flexibly.

Navigating Together: Our Enhanced Health & Safety Measures

Our approach brings together 5 elements that help us promote health and safety for all Guests, Crew Members and Cast Members, something we at Disney Cruise Line take very seriously. [Read our Privacy Policy.](#)



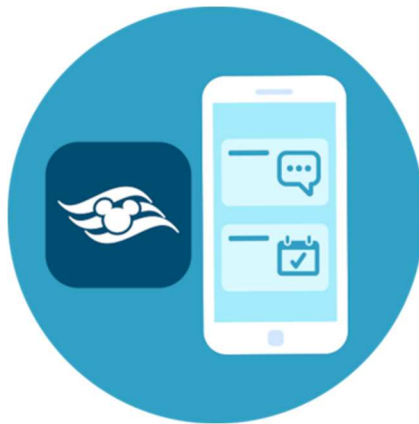
Health & Wellness

We're emphasizing a combination of measures to help promote health and wellness on our ships.



Enhanced Cleaning

We've updated our protocols for cleanliness throughout our ships.



Innovative Technology

We're harnessing the power of the Disney Cruise Line Navigator app to promote physical distancing for all on board.



Crew Member Training

Health and safety starts with our Crew, so we've adopted a number of additional policies and protocols.



Working Together

We're giving Guests the information they need to navigate our new policies

and do their part.

Top Things You Need to Know

Here are the most important things you need to be aware of as you prepare for your Disney Cruise Line vacation.



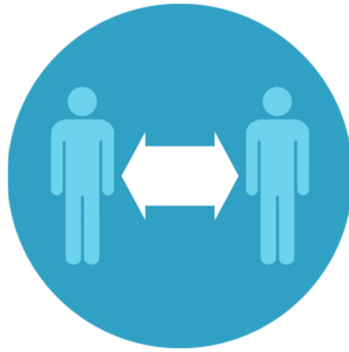
COVID-19 Vaccination

Learn about the requirements for COVID-19 vaccination at the time of sailing.



COVID-19 Testing

Learn about the COVID-19 tests that are required for Guests before leaving home and at the terminal.



Physical Distancing

We're reducing Guest capacity aboard our ships and adjusting experiences to promote physical distancing.



Face Coverings

Learn more about where face coverings are required aboard the ship.



Disney Cruise Line Navigator App

Download the latest version of our app on your mobile device, with location services and notifications enabled.



Online Check-In

Be sure to complete your Online Check-In at least one day prior to the date you set sail.